

DANGEROUS POISON
KEEP OUT OF REACH OF CHILDREN
READ SAFETY DIRECTIONS BEFORE OPENING OR USING
FOR ANIMAL TREATMENT ONLY

COOPERS[®]
TIXAFLY[®]
CATTLE DIP AND SPRAY

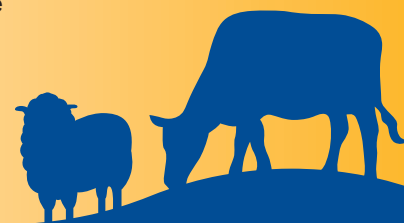


ACTIVE CONSTITUENTS:

25 g/L DELTAMETHRIN
125 g/L ETHION (an
anticholinesterase compound)

Solvent: 657 g/L HYDROCARBON LIQUID

For the control of susceptible strains of Cattle Tick,
including chlorinated hydrocarbon, organophosphate
and amidine resistant ticks. Does not control Parkhurst
Strain. Controls Buffalo Fly and New Zealand Cattle
Tick.



14893

COOPERS

20 Litres

COOPERS[®] TIXAFLY[®]

CATTLE DIP AND SPRAY

CLAIMS

For the control of susceptible strains of Cattle Tick (*Boophilus microplus*), including chlorinated hydrocarbon, organophosphate and amidine resistant ticks. Does not control Parkhurst Strain. Controls Buffalo Fly (*Haematobia irritans exigua*) and New Zealand Cattle Tick (*Haemaphysalis longicornis*).

Cattle Ticks (*Boophilus microplus*)

TIXAFLY is highly efficient against most known strains of resistant Cattle Tick including Biarra, Mt. Alford, Mackay, Ridgeland and the amidine resistant "Ulam" strain, when used according to directions and cattle are sprayed or dipped at 21 day intervals beginning in the spring and continuing until infestation is light. Does not control Parkhurst strain of Cattle Tick.

Buffalo Fly (*Haematobia irritans exigua*)

TIXAFLY is highly effective in the control of Buffalo Fly. Buffalo Fly may fail to appear on cattle dipped with **TIXAFLY** during periods of low challenge. Heavy rain immediately following dipping will reduce the period of Buffalo Fly protection and cattle may have to be dipped again if the Buffalo Fly reappears following heavy rain.

New Zealand Cattle Tick (*Haemaphysalis longicornis*)

Cattle should be sprayed or dipped at 7-10 day intervals and continued until infestation is light.

DIRECTIONS FOR USE

RESTRAINTS

NOT TO BE USED on lactating dairy cattle.

Avoid stock movement during the heat of the day.

Provide stock with plenty of room, shade and time to cool off before dipping.

Provide water and allow all animals time to drink before dipping.

DO NOT hold stock in yards for long periods following dipping in hot weather.

Permit young calves a clear swim through the dip before the next adult beast is allowed to enter the dip. If necessary draft off calves prior to dipping and dip them separately.

DO NOT add Tixafly to any existing dips as the chemicals may not be compatible.

Wash out spraying equipment with clean water after use.

DIP MANAGEMENT

Water:

TIXAFLY can be used in hard or soft water.

Charging:

1. Accurately measure the capacity of the dipping tank and spray race sump, preferably using a water meter and permanently mark a dip stick and/or the side of the dipping tank to show 400 litre changes in volume.

2. Charge at the rate of 1 litre of **TIXAFLY** to 500 litres of water.

Replenishment/Topping up

1. **Plunge Dips.** Replenish after every fall of 400 litres of dip wash by adding 1 litre of **TIXAFLY** and 400 litres of water. Topping up can be carried out at any convenient level using this replenishment rate.

2. **Spray Races.** Constant replenishment systems should be used. For every fall of 100 litres add 250 mL of **TIXAFLY** and 100 litres of water.

3. **Hand Spraying.** A convenient measure is to add 400 mL of **TIXAFLY** to a 200 litre drum of water for hand spraying. Apply approximately 10 litres of wash per beast to ensure coverage. Animals should be held in a crush and strict attention paid to applying the wash to all parts of the animal's body. Wet to run off.

"THE HEAD COUNT SYSTEM" OF CATTLE DIP MANAGEMENT.

1. Having established the volume of the dip tank, charge the dip at the rate of 1 litre of **TIXAFLY** to 500 litres of water.

2. Keep an accurate record of the number of head dipped.

3. Add dip concentrate at the end of each dipping or, if dipping large numbers after no more than 600 head. Fill the graduated measure provided to the level equivalent to the number of head dipped. The dip concentrate should be premeasured with water and added to the dip tank. All classes of cattle (ie. weaners and adults) are counted as one head.

4. No measurement of water added is required, however the dip should be kept to the full mark by frequent addition of water or at least filled with every addition of concentrate. No more than 600 cattle should be dipped before chemical is added to the dip.

5. Continue to sample your dip in the manner advised by the Department of Primary Industries.

NOT TO BE USED FOR ANY PURPOSE OR IN ANY MANNER CONTRARY TO THIS LABEL

UNLESS AUTHORISED UNDER APPROPRIATE LEGISLATION.

MEAT: WITHHOLDING PERIOD NIL

TRADE ADVICE

EXPORT SLAUGHTER INTERVAL (ESI): DO NOT USE less than 21 days before slaughter for export. The ESI on this label was correct at the time of label approval. Before using this product, confirm the current ESI from Schering-Plough Customer Service on 1 800 226 511 or the APVMA website (www.apvma.gov.au/residues/ESI.shtml).

GENERAL INSTRUCTIONS

Ensure all measurements are accurate

1. The required amount of **TIXAFLY** should be mixed in a small quantity of water and then poured directly into the dip, along its whole length, then stirred.

2. **Stirring the wash.** **TIXAFLY** wash in plunge dips must be thoroughly stirred before dipping or whenever replenishments have been made. At the start of dipping use 30 head of cattle as stirrers and re-dip them later in the run. Whenever wash has been standing it should be stirred before re-use.

3. **Corrections for evaporation, leaking or flooding**

(a) Before dipping, check the level and compare it with the level at the end of the previous dipping.

(b) If the level has fallen because of evaporation, add water only to bring it to the level at the completion of the previous dipping. Consistent low levels may indicate leakage, especially in old dips.

(c) If the level has risen because of flooding, add **TIXAFLY** only. Use 1 litre of **TIXAFLY** for every 400 litres rise in the dip.

(d) After correction, top up at the replenishment rate of 1 litre of **TIXAFLY** to each 400 litres of water added to fill the dip.

4. **Cleaning out the plunge bath.** When the dip becomes very muddy it should be cleaned out and recharged. Do not discharge waste liquid into streams.

5. **Dipping care.** Care should be taken when handling stock during plunge dipping. This applies particularly to very young calves.

For more information, call Coopers Customer Service on 1 800 226 511.

PROTECTION OF WILDLIFE, FISH, CRUSTACEA AND ENVIRONMENT

Dangerous to Fish. Do not contaminate dams, waterways or drains with the chemical, waste liquid or used containers.


SAFETY DIRECTIONS

Product and spray are poisonous if absorbed by skin contact or swallowed. Repeated minor exposure may have a cumulative poisoning effect. Avoid contact with eyes and skin. Do not inhale spray mist. Obtain an emergency supply of Atropine tablets 0.6 mg. When preparing spray or dip wear cotton overalls buttoned to the neck and wrist and washable hat, elbow length PVC gloves and face shield. If product on skin, immediately wash area with soap and water. After use and before eating, drinking or smoking, wash hands, arms and face thoroughly with soap and water. After each day's use, wash gloves, face shield and contaminated clothing.

FIRST AID

If poisoning occurs, contact a doctor or Poisons Information Centre (Phone 131 126). If swallowed, give one Atropine tablet every 5 minutes until dryness of the mouth occurs – if poisoned by skin absorption or through lungs, remove any contaminated clothing, wash skin thoroughly and give Atropine tablets as above. Get to a doctor or hospital quickly.

Additional information is listed in the Material Safety Data Sheet.



UN NO 3018
ORGANOPHOSPHOROUS PESTICIDES,
LIQUID, TOXIC, N.O.S. (ETHION 12.5%,
DELTAMETHRIN 2.5%, LIQUID
HYDROCARBONS 66%)
HAZARDOUS CHEMICAL CODE: 2WE
PACKAGING GROUP II

In a transport emergency
Dial 000
Police or Fire Brigade

SPECIALIST ADVICE IN EMERGENCY ONLY
Schering-Plough Pty Ltd
1 800 226 511
ALL HOURS – AUSTRALIA WIDE

Warranty

Schering-Plough Pty Ltd (SPPL) warrants that this product is of merchantable quality and fit for its intended purpose. SPPL's liability for any loss, including consequential losses or injury caused by any act or omission, including negligent acts or omissions, by SPPL or its agent, is limited to replacing or repairing the product at the option of SPPL. If possible, a sample of any product causing concern should be retained or delivered to SPPL within 30 days for a scientific examination.

Disposal of unused dip wash

TIXAFLY may be deactivated and degraded by the addition of a sodium hydroxide (caustic soda) solution. For each 2000L of dip wash add a solution of 100g of caustic soda dissolved in 1L of water. Disposal of used dip contents should be into a pit of adequate size to cater for the volume to be discarded.

DISPOSAL

This container can be recycled if it is clean, dry, free of visible residues and has the **drumMUSTER** logo visible. Triple or pressure rinse container for disposal. Dispose of rinsate or any undiluted chemical according to State legislative requirements. Wash outside of the container and the cap. Store cleaned container in a sheltered place with cap removed. It will then be acceptable for recycling at any **drumMUSTER** collection or similar container management program site. The cap should not be replaced but may be taken separately.

COOPERS ANIMAL HEALTH

A division of Schering-Plough Pty Ltd

Level 4, 66 Waterloo Road, North Ryde NSW 2113

STORE below 30°C (Room Temperature) in the closed original container in a dry well-ventilated area. Do not store for prolonged periods in direct sunlight.

BATCH

EXPIRY

APVMA Approval No. 45981/20/0408

© Schering-Plough Animal Health Corporation Registered Trademark

© Yellow (PANTONE® 123) the predominant colour of Coopers packaging is a Registered Trademark of Schering-Plough Animal Health Corporation. PANTONE is a registered trademark of Pantone, Inc.

© Schering-Plough Pty Ltd 2008



14932/3



20L