

POUR-ON FOR SHEEP

READ SAFETY DIRECTIONS BEFORE OPENING OR USING
FOR ANIMAL TREATMENT ONLY

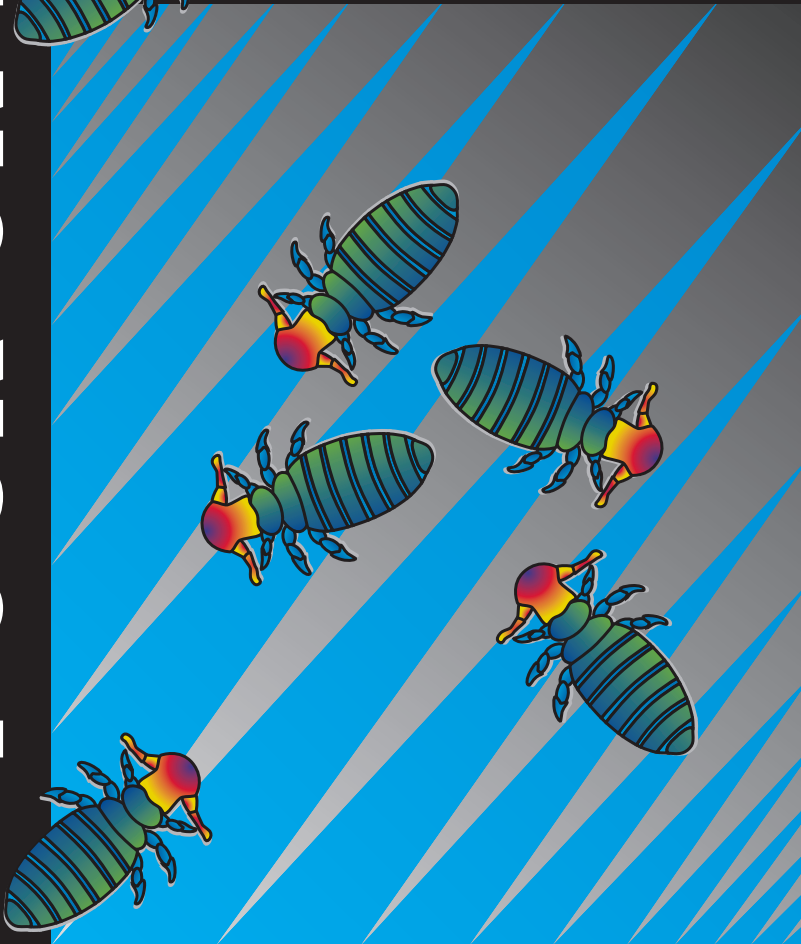
ELANCO* AH0493



Extinosad®



POUR-ON FOR SHEEP
ACTIVE CONSTITUENT: 20 g/L Spinosad



For the control
of lice
(*Bovicola ovis*) in
sheep off-shears
and with long
wool, including
strains resistant
to synthetic
pyrethroids.

20 LITRES

READ DIRECTIONS FOR USE BEFORE
OPENING OR USING THIS PRODUCT

For the control of lice (*Bovicola ovis*) in sheep off-shears and with long wool, including strains resistant to synthetic pyrethroids. Spinosad, the active ingredient in EXTINOSAD POUR-ON, is the first member of the spinosyn class of insecticides and has a unique action on the insect nervous system.

DIRECTIONS FOR USE:

RESTRAINTS:

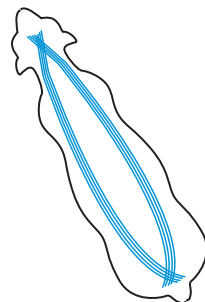
DO NOT USE on ewes which are producing or may in the future produce milk or milk products for human consumption.

DO NOT mix treated sheep with untreated sheep.

SHAKE CONTAINER GENTLY SEVERAL TIMES BEFORE USE

Apply EXTINOSAD POUR-ON evenly along the backline from the poll to the base of the tail using a manual or powered applicator with a t-bar nozzle. Halve the dose volume and apply in 2 bands, approximately 5 cm from the mid-point of the backline on each side. Applying the product to the flanks will improve the spread of EXTINOSAD POUR-ON.

| Sheep Category | Bodyweight (kg) | Dose (mL) | No. of sheep treated / pack |
|---|--------------------------------------|-----------|-----------------------------|
| <i>Off-shears</i> (Within 24 hours after shearing) | 20-35 | 15 | 1333 |
| | 36-55 | 20 | 1000 |
| | 56-75 | 25 | 800 |
| | Add 2 mL for each 5 kg above 75 kg | | |
| <i>Suckling Lambs (Unshorn)</i> | Up to 9 | 5 | 4000 |
| | 10-19 | 7.5 | 2666 |
| | 20-29 | 15 | 1333 |
| | Add 3.5 mL for each 5 kg above 29 kg | | |
| <i>Long wool (6 - 12 months after shearing)</i> | Adult (>6 months old) | 50 | 400 |



Critical Comments:

Off-shears: Dose rates are to be based on the heaviest sheep in each group (ewes, rams, lambs). Sheep in each group should be weighed.

Drafting into two or more lines may be appropriate, to avoid excessive overdosing.

Do not under dose; check the accuracy of equipment before and during treatment.

Sheep treated with long wool should be re-treated after shearing.

Reduced effectiveness is likely if used on sheep with lumpy wool.

For ewes with suckling lambs, treat lambs at the appropriate rate, see table above.

This product has not been tested on sheep with short wool, or those shorn using "cover-combs".

General Instructions:

EXTINOSAD POUR-ON is a short acting, non-residual product. Maximum lice kill at treatment and strict quarantine conditions for treated sheep are necessary for effective lice control. It is recommended that a thorough muster be conducted so that no untreated sheep remain. Boundary fences should be checked to ensure animals are contained and stray sheep are excluded. Treated sheep must be kept separate from lice infested sheep or sheep of unknown lice status. For effective lice control, every sheep on the property should be treated at the same time.

Efficacy and safety studies using EXTINOSAD POUR-ON involved treatment of ewes, rams, wethers and lambs. Lice efficacy was not specifically evaluated in lambs less than 6 months of age, however, lice control was achieved in ewes with lambs at foot when both were treated at the recommended rate.

EXTINOSAD POUR-ON is spread over the body by passive diffusion and physical contact (e.g. rubbing with other sheep). To facilitate product movement, treated sheep should be penned closely and held in the yards immediately after application.

It is good agricultural practice not to treat animals when they are wet or if rain is likely. However, moderate rainfall following treatment does not adversely affect the effectiveness of the product.

EXTINOSAD POUR-ON contains a blue dye to identify treated sheep. Traces of blue dye may still be visible at shearing, but the dye is scourable from the wool. Do not leave container, hose or applicator in the sun for long periods of time. At the end of use, clean out the applicator, nozzle and hose by pumping through with clean water.

NOT TO BE USED FOR ANY PURPOSE, OR IN ANY MANNER CONTRARY TO THIS LABEL UNLESS AUTHORISED UNDER THE APPROPRIATE LEGISLATION.

WITHHOLDING PERIODS:

MEAT: Off-shears: DO NOT slaughter for human consumption for 14 days after treatment.

Suckling lambs: DO NOT slaughter for human consumption for 14 days after treatment.

Long wool: NIL

MILK: DO NOT USE on ewes which are producing or may in the future produce milk or milk products for human consumption.

WOOL: NIL

TRADE ADVICE:

Export Slaughter Interval (ESI): **DO NOT USE less than 21 days (off shears), or 0 days (long wool) before slaughter for export. The ESI on this label was correct at the time of label approval. Before using this product, confirm the current ESI from Elanco Animal Health (1800 226 324) or the APVMA website <http://www.apvma.gov.au/residues/ESI.shtml>.**

SAFETY DIRECTIONS: May irritate the skin. Will damage eyes. Avoid contact with eyes and skin. If product in eyes, wash it out immediately with water. Wash hands after use. When using the product wear elbow-length PVC gloves and goggles. After each day's use wash gloves.

FIRST AID: If poisoning occurs, contact a doctor or Poisons Information Centre. Phone 13 1126.

Additional information is listed in the Material Safety Data Sheet.

DISPOSAL: Triple or (preferably) pressure rinse container with water and dispose of rinsate in a disposal pit set up for this purpose clear of waterways, vegetation and roots. Do not dispose of undiluted chemicals on site. Break, crush or puncture and bury empty containers in a local authority landfill. If not available, bury the containers below 500mm in a disposal pit. Empty containers and product should not be burnt.

STORAGE: Store below 30°C (Room Temperature) in a dry place in tightly closed original container.

Do not freeze. Do not store in direct sunlight. **KEEP OUT OF REACH OF CHILDREN.**

APVMA Approval No: 60117/20L/0210

Batch No:

***Elanco, Extinosad® and the diagonal colour bar are trademarks of Eli Lilly and Company**

Expiry Date:

ELANCO ANIMAL HEALTH A DIVISION OF ELI LILLY AUSTRALIA PTY. LIMITED A.B.N. 39 000 233 992
112 WHARF ROAD, WEST RYDE, N.S.W. 2114 TEL: Toll free 1800 226 324



9 323829 003108